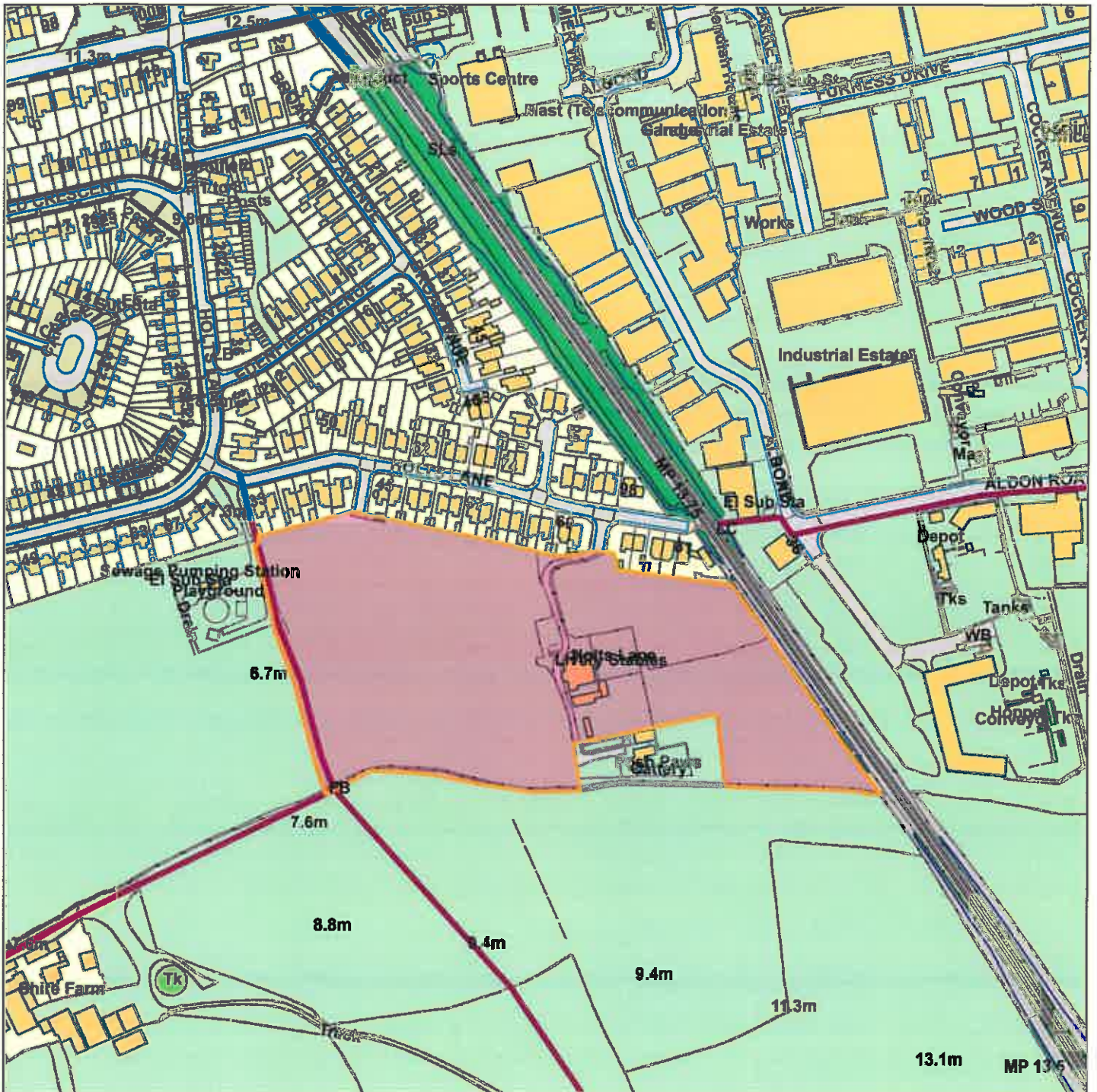


Planning Committee

18/00680/OULMAJ -Land off Holts Lane Poulton-le-Fylde



Scale : 1:3453

Reproduced from the Ordnance Survey map with the permission of the Controller of Her Majesty's Stationery Office © Crown Copyright 2012.

Unauthorised reproduction infringes Crown Copyright and may lead to prosecution or civil proceedings.

Organisation	Wyre Council
Department	Planning Department
Comments	Item3
Date	17 September 2019
SLA Number	100018720